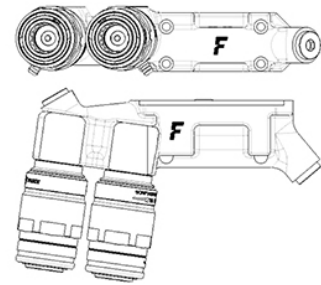
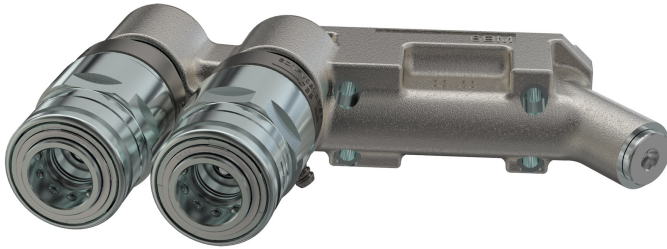


6BM6DNPV

Castings with couplings for agriculture

Applications

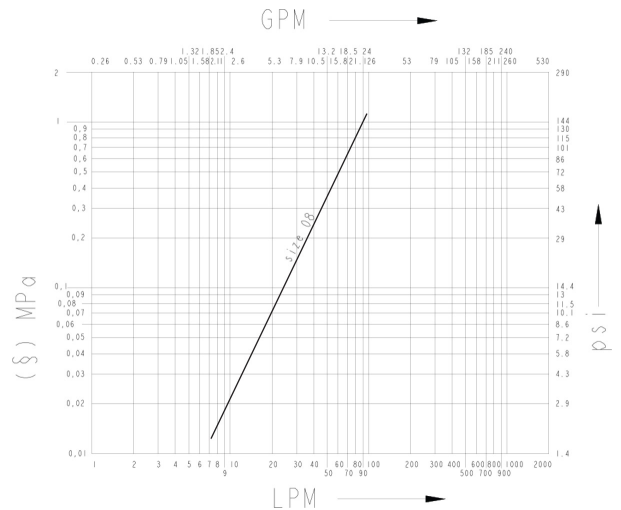


Technical Specifications

Dash Size	Size (Inch)	Working Pressure (MPa)	Flow Rate (l/min)	Spillage (ml)	Force to Connect (N)	Burst pressure (MPa)		
						Male	Female	Male & Female
o8	1/2	25	38	1,4	200		100	100

Seals	NBR & PUR
Material	Cast Iron & Steel
Valve Type	Poppet
Working temperatures	-25 °C to 125 °C
Surface treatment	MATE 500 (CrIII)
Series Interchange	ISO 7241-A
Connection	Push to Connect
Disconnection	Pull to Disconnect
Connection Under Pressure	Allowed Male Half up to W.P. and residual in Female Half

Pressure Drop



Data shown in the diagram are indicative and not binding.
 (§) 1 MPa = 10 bar. Dash size are specified.