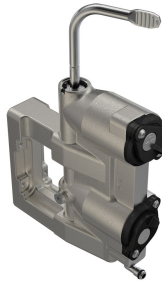


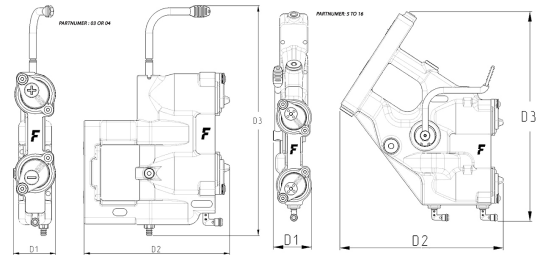
4BM4DCPV

Castings with couplings for agriculture

Cast iron blocks equipped with two 1/2" cartridges complying with ISO 7241-1 part A standards. Push-pull connection. Great ease to connect and disconnect agricultural implements thanks to relief of internal residual pressure ensured by the lever. Breakaway feature.



Applications

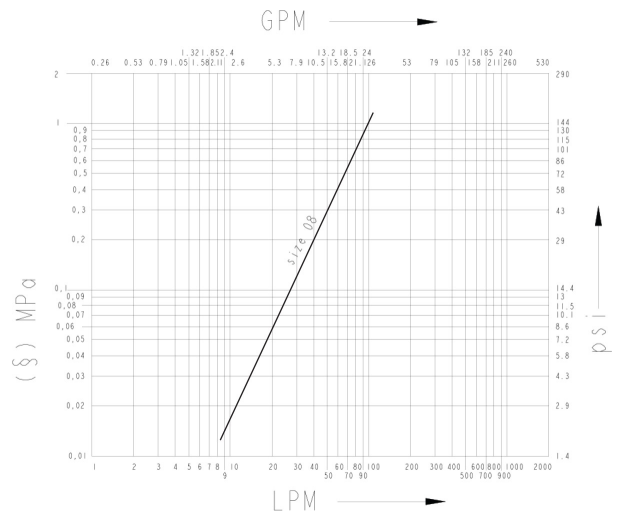


Technical Specifications

Dash Size	Size (Inch)	Working Pressure (MPa)	Flow Rate (l/min)	Spillage (ml)	Force to Connect (N)	Burst pressure (MPa)		
						Male	Female	Male & Female
o8	1/2	25	45	1,8	0	100	100	

Seals	HNBR & PUR
Material	Cast Iron & Steel
Valve Type	Poppet
Working temperatures	-25 °C to 125 °C
Surface treatment	MATE 500 (CrIII)
Series Interchange	ISO 7241-A
Connection	Push to Connect
Disconnection	Pull to Disconnect
Connection Under Pressure	Allowed Both Halves up to W.P.

Pressure Drop



Data shown in the diagram are indicative and not binding.
 (§) 1 MPa = 10 bar. Dash size are specified.